

Telling the time to 5 minutes

1 Label the clock to show the number of minutes past the hour.

A clock face with handwritten labels for minutes past the hour:

- 12: 0 minutes
- 1: 5 minutes
- 2: 10 minutes
- 3: 15 minutes
- 4: 20 minutes
- 5: 25 minutes
- 6: 30 minutes
- 7: 35 minutes
- 8: 40 minutes
- 9: 45 minutes
- 10: 50 minutes
- 11: 55 minutes

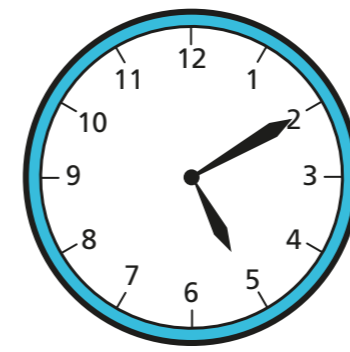
2 Label the clock to show what time would be shown if the minute hand was pointing to each interval.

A clock face with handwritten labels for time intervals:

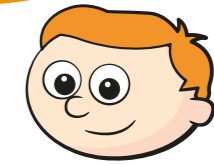
- 12: 0'clock
- 1: 5 minutes past
- 2: 10 minutes past
- 3: 15 minutes past
- 4: 20 minutes past
- 5: 25 minutes past
- 6: 30 minutes past
- 7: 20 minutes to
- 8: 15 minutes to
- 9: 10 minutes to
- 10: 5 minutes to

Is there more than one possible answer for each label?

3



The hour hand is pointing just after 5 and the minute hand is pointing to 2, so the time is 2 minutes past 5



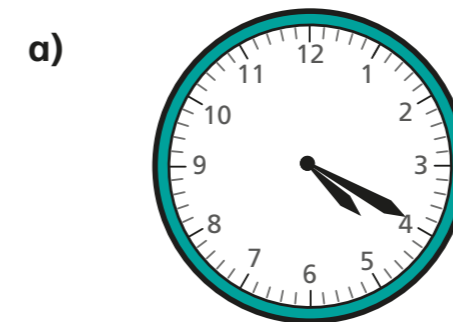
What mistake has Ron made?

The minute hand pointing to 2 means it is 10 minutes past not 2 minutes past.

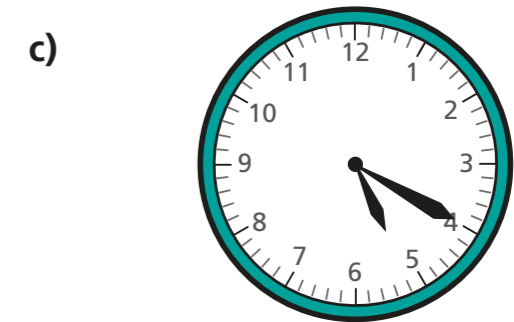
What time is it? 10 minutes past 5

4

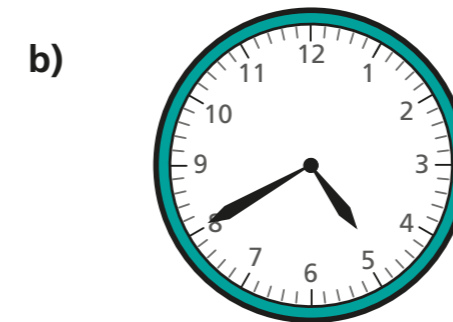
What time is shown on each clock?



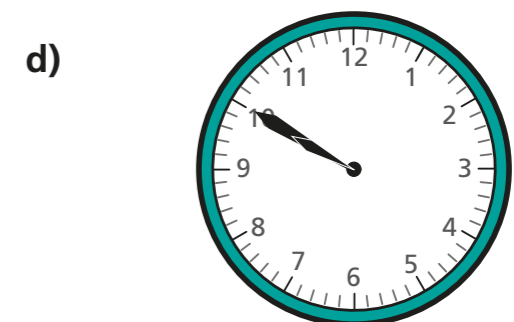
20 minutes past 4



20 minutes past 5



20 minutes to 5

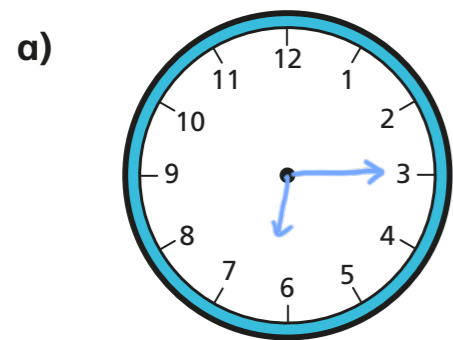


10 minutes to 10

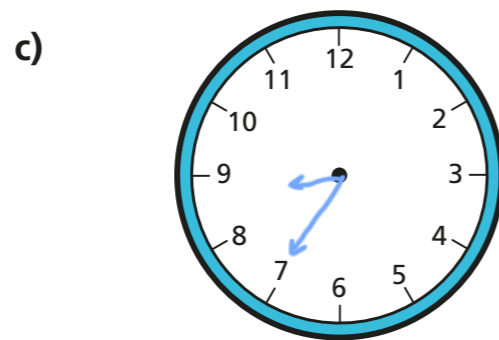




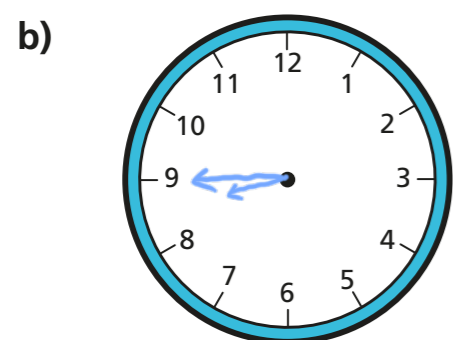
5 Draw the hands on the clocks to show the correct times.



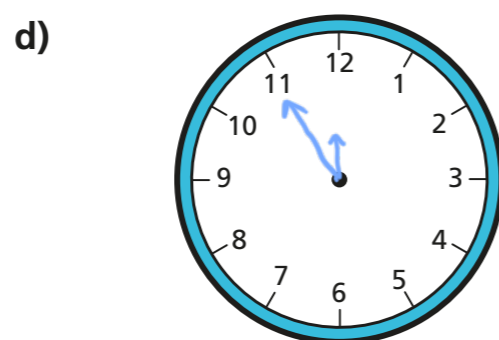
15 minutes past 6



25 minutes to 9

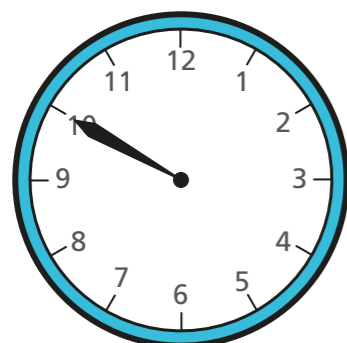


15 minutes to 9



5 minutes to 12

6 Jack wants to tell the time, but the hour hand has fallen off the clock.



There are 12 different possible times it could be during a full day.



Do you agree with Jack? No

Talk about it with a partner.



7 The minute hand and the hour hand of a clock are both pointing to an even number.

It is before midday. What times could it be?

Give three possible answers.

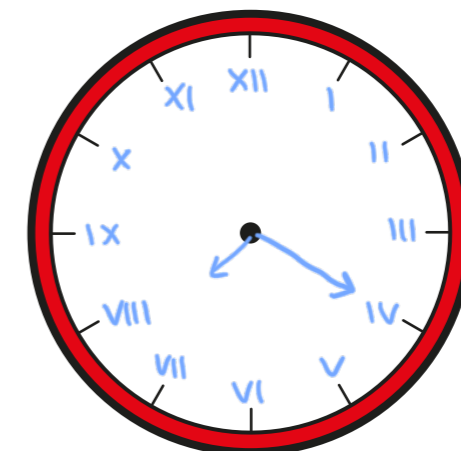
e.g. 6 o'clock 8 o'clock 10 o'clock

Compare answers with a partner. Can you find any more?

8 The numbers of the clock face were written in Roman numerals but they have been rubbed off.

The current time has a V in the hour and a V in the minutes.

e.g.



What time could it be? Draw your answer on the clock.

Are there any other answers?

various answers

Talk about it with a partner.

